

# DIESEL ENGINE TACHOMETER

# GE-1200

**Discontinued**  
(Reference only)

For easy r/min measurements on 4-cycle diesel engines by clamping the detector to the fuel injection pipe.



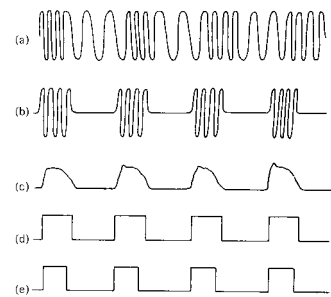
**CP-044**  
Diesel Engine Rotation  
Detector (Optional)

*Handheld type diesel engine tachometer. Both analog and pulse outputs are provided.*

### Diesel Engine Rotation Detector : CP-044 Measuring Principle

CP-044 is piezo-electric type vibration detector which detects vibrations generated. With separating high frequency component, which is appeared only when the injection pump is performed, the number of times of fuel injection, i.e., r/min of the engine can be detected.

### Example of process of waveform-shaping and separating high frequency vibration components



#### Pulse output

1 pulse every two rotations of the engine  
TTL Level

#### Analog output

0 to 1V/0 to 10,000 r/min  
Voltage output

